

▶ EXPORTS BY COUNTRY OF DESTINATION

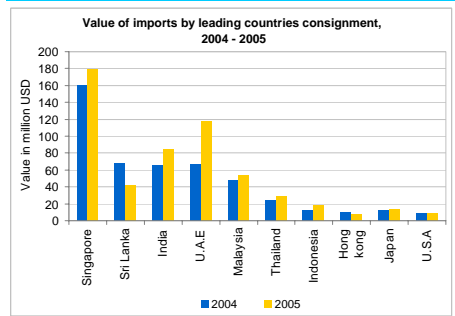
Country	2005		2006	
	Jan-July	%	Jan-July	%
Total Exports	104,223	100	63,903	100
Germany	5,544	5	3,199	4
Hong Kong	807	1	466	1
Japan	22,520	22	14,909	23
Singapore	5,747	6	3,871	6
Sri Lanka	16,134	15	8,855	14
Thailand	22,732	22	14,705	23
Malaysia	503	0	284	0
U.K.	14,347	14	8,473	13
U.S.A.	868	1	717	1
Others	15,022	14	8,330	13

Chn for Change
 Note: Due to rounding the total may not tally with the figures

▶ QUANTUM INDEX FOR SELECTED EXPORT ITEMS

Item	Index Base: 1998 = 100		
	2003	2004	2005
Frozen tuna (MT)	377.6	406.4	437.9
Dried tuna (MT)	114.7	107.4	113.4
Salted dried fish (MT)	118.2	119.2	120.8
Fresh or chilled reef fish (MT)	415.3	205.9	166.6
Fresh or chilled tuna (MT)	212.9	285.3	357.0
Canned fish (MT)	105.5	109.3	107.3
Apparel & clothing (Numbers)	327.8	331.7	6.8

▶ IMPORTS BY COUNTRY OF CONSIGNMENT



▶ IMPORTS BY COUNTRY OF CONSIGNMENT

Country	2005		2006	
	Jan-July	%	Jan-July	%
Total	744,865	100	402,907	100
Australia	15,883	2	7,472	2
Canada	5,439	1	2,464	1
European Union	105,739	14	67,052	17
Hong Kong	7,951	1	4,286	1
Indonesia	18,154	2	11,164	3
India	83,865	11	43,579	11
Japan	13,380	2	6,395	2
Malaysia	53,439	7	25,706	6
Norway	3,437	0	850	0
New Zealand	6,058	1	4,235	1
Singapore	179,746	24	93,998	23
Sri Lanka	42,576	6	21,653	5
Thailand	28,498	4	14,502	4
U.A.E	117,163	16	55,045	14
U.S.A.	8,482	1	4,152	1
Other Countries	55,054	7	40,354	10

Note: Due to rounding the total may not tally with the figures

▶ NATIONAL ACCOUNTS

Item	2005
GDP (at 1995 constant prices)	674.0
GDP (million US\$)	674.0
Annual Growth Rate	-4.6
GDP per Capita (US\$)	2,271

BALANCE OF PAYMENTS		2005
(In million US\$)		2-Jan-06
Trade balance		-493.4
Exports (F.O.B)		162.0
Imports		-655.5
Services (net)		90.2
Un-required transfers		116.3
Non-monetary capital (net)		166.6
Monetary movements		120.4

FINANCE		2005
(In million US\$)		Prv Est
Total Revenue and Grants		354.9
Total Revenue		286.0
Grants		68.9
Total expenditure & net lending		448.4
Recurrent		331.3
Capital		124.3
Net Lending		-7.1
Total debt service ratio		0.5

▶ TRANSPORT

Item	Aug-06
Total	36,607
Land transport	3,243
Cars	28,146
Motor / auto cycles	5,218
Other vehicles	
Total	25,852
Sea transport	14,638
Fishing fleet	487
Baththeli	2,062
Launches	796
Boats	7,869
Other vessels	

▶ EXCHANGE RATE

Rufiyaa is pegged to the US\$ at a market determined rate. On July 24th 2001 the Maldives Monetary Authority announced new buying and selling rates for the US\$

Exchange Rate, 25th July 2001 onwards	Buying	Selling
US\$: 1.00	12.75 (Rf)	12.85 (Rf)

Average exchange rate	1995-2000	2001	2002-2005
US\$: 1.00	11.77 (Rf)	12.24 (Rf)	12.80 (Rf)



Ministry of Planning and National Development

▶ LOCATION, AREA AND CLIMATE

Location
 Latitude : 7° 6' 35" N to 0° 42' 24" S
 Longitude : 72° 33' 19" E to 73° 46' 13" E

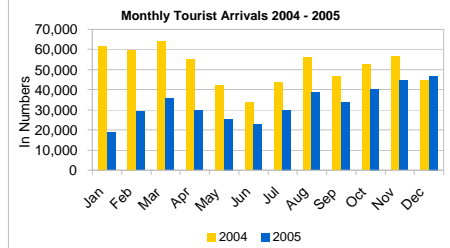
Area
 Area (including sea) 115,300 sq. km
 E.E.Z 859,000 sq. km

Climate 2005
 Annual rainfall (mm) 1,818.7
 Average daily min. temp. (°C) 25.5
 Average daily max. temp. (°C) 31.0
 Recorded lowest temp. in the Maldives (Male', '78) 17.2°C
 Recorded highest temp. in the Maldives (Kadhdhoo, '91) 36.8°C

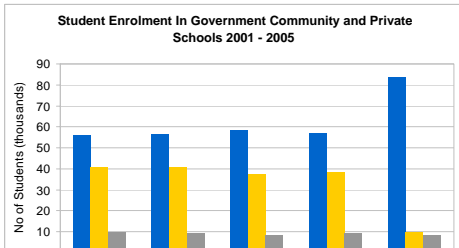
▶ HEALTH

Item	2005
Life expectancy at birth (years)	
Male	72
Female	73
Infant mortality rate /000 Live Births	12
Crude Birth Rate (CBR) /000 Population	19
Crude Death Rate (CDR) /000 Population	3
Still Birth Rate (SBR) /000 Live Births	8
Maternal Mortality Rate (MMR)/000 Live Births	1
Population per hospital bed	384
Population per practicing staff-nurse	496
Population per practicing doctor	775
Doctors / 10,000 Population	13
Family Health Workers / 10,000 Population	12
Community Health Workers / 10,000 Population	7

▶ TOURISM



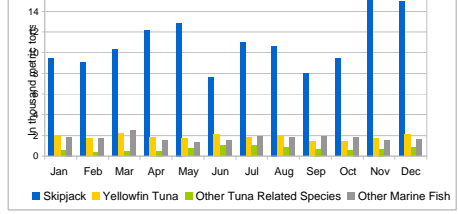
▶ EDUCATION



▶ FISHERIES

Item	2005
Total fish catch ('000 metric tons)	186.0
Local consumption & Residual	50.1
Exports (excluding previous years stock)	129.6
Stock of current years	6.3
Increase in fish catch (2004-2005)	17%

Composition of fish catch ('000 metric tons)		2005
Total		186.0
Skipjack		132.1
Yellowfin tuna		24.6
Other tuna related species		8.3
Other marine fish		21.0



▶ PRINCIPAL EXPORTS

Item	2005		2006	
	Jan-July	%	Jan-July	%
Total Exports	104,223	100	63,903	100
Total fish and fish products	88,628	85	51,761	81
Canned fish	15,187	15	8,520	13
Frozen tuna	9,994	10	5,681	9
Fresh or chilled reef fish	1,536	1	860	1
Fresh or chilled tuna	1,106	1	716	1
Frozen reef fish	25,978	25	15,323	24
Frozen reef fish	143	0	106	0
Live reef fish	41,081	39	26,724	42
Salted dried fish	1,314	1	713	1
Sea cucumber	2,007	2	910	1
Other marine products	1,814	2	1,238	2
Apparel & clothing	2,364	2	1,032	2
Scrap metals	604	1	604	1
Others	1,079	1	454	1

Dhivehi is the national and official language.
 English is widely used in education and foreign communication.

*21 Resorts were closed due to tsunami on 26th December 2004, out of these 16 resorts have been re-opened by May 2006